



2021 Alabama 200 Winner Christopher Tullis

58th Alabama 200

COMPETITOR INFORMATION

MONTGOMERY MOTOR SPEEDWAY – March 5, 2022



SCHEDULE/EVENT INFO

Friday March 4th

1:00	Pit Gate Opens
1:30	Crew Chief Meeting in Tech Shed
2:00-6:00	Tires and Fuel Available
3:00-7:30	Tech Open (PLM & MoM will tech by appointment)
2:00-7:00	Rotating Practice
8:00	Pit Area Closes

Saturday March 5th

10:00	Pit Gate Opens
10:00-3:00	Tech & Registration Open
10:30	Ala 200 Qualifying Tire Selection
11:30	Mandatory Driver/Crew Chief/Spotter Meeting
12:30-1:15	Ala 200 Practice 1
1:20-1:40	Outlaw Practice 1
1:45-2:15	Modifieds of Mayhem Practice 1
2:10	PLM Race Tires Released (Must go straight to pit road)
2:15-2:45	Ala 200 Practice 2
2:50-3:10	Outlaw Practice 2
3:15-3:45	Modifieds of Mayhem Practice 2
3:00	PLM Race Tires Must Be Returned To Impound
3:00	Ala 200 / MOM Tech Closes for Rechecks
3:30	Ala 200 Qualifying Tech Starts
4:00	Grandstand Opens
3:45	Outlaws Line Up To Qualify
4:00	Outlaw Qualifying
4:15	Modifieds of Mayhem Line Up To Qualify
4:30	Modified of Mayhem Qualifying
5:00	Alabama 200 Qualifying
5:45	Opening Ceremonies
6:30	Features
	Alabama 200 Last Chance Qual 25 Laps
	Outlaws 40 Laps
	Modifieds of Mayhem 58 Laps
	58th Annual Alabama 200

Hauler Parking & Pit Ticket Sales

- Hauler staging will be in main lot Thursday night. Please do not block driveways.
- Pit ticket sales will be open Friday from 12:00pm-6:00 and Saturday from 10:00-until. Please fill out a team form and leave an open check for team members arriving separately.

Pit Stalls

- Pit stalls are on a first come first serves basis. If you need to arrange special parking call track for more info.

Golf Carts

- Golf Carts/ATV's are allowed. Use can be revoked for reckless use or blocking active areas. Limit one vehicle per team.

Practice Tire Availability

- All PLM teams will be allowed to purchase 1 set of tires for use during any private testing and practice Fri-Sat. We will release your second set of race tires on Saturday for mock runs.
- All MoM teams will be allowed to purchase 1 set of practice tires for use during any private testing and practice Fri-Sat.

PLM Event Procedure

- Top 26 in qualifying transfer to the feature.
- Top 4 in last chance race will transfer to positions 27-30.
- Pos 31-32 will be provisional for anyone in top 10 in 2021 points at MMS, FFS, NFS or CMP in that order. If not needed will revert to pos. 5 & 6 from last chance race.

UPS/FEDEX

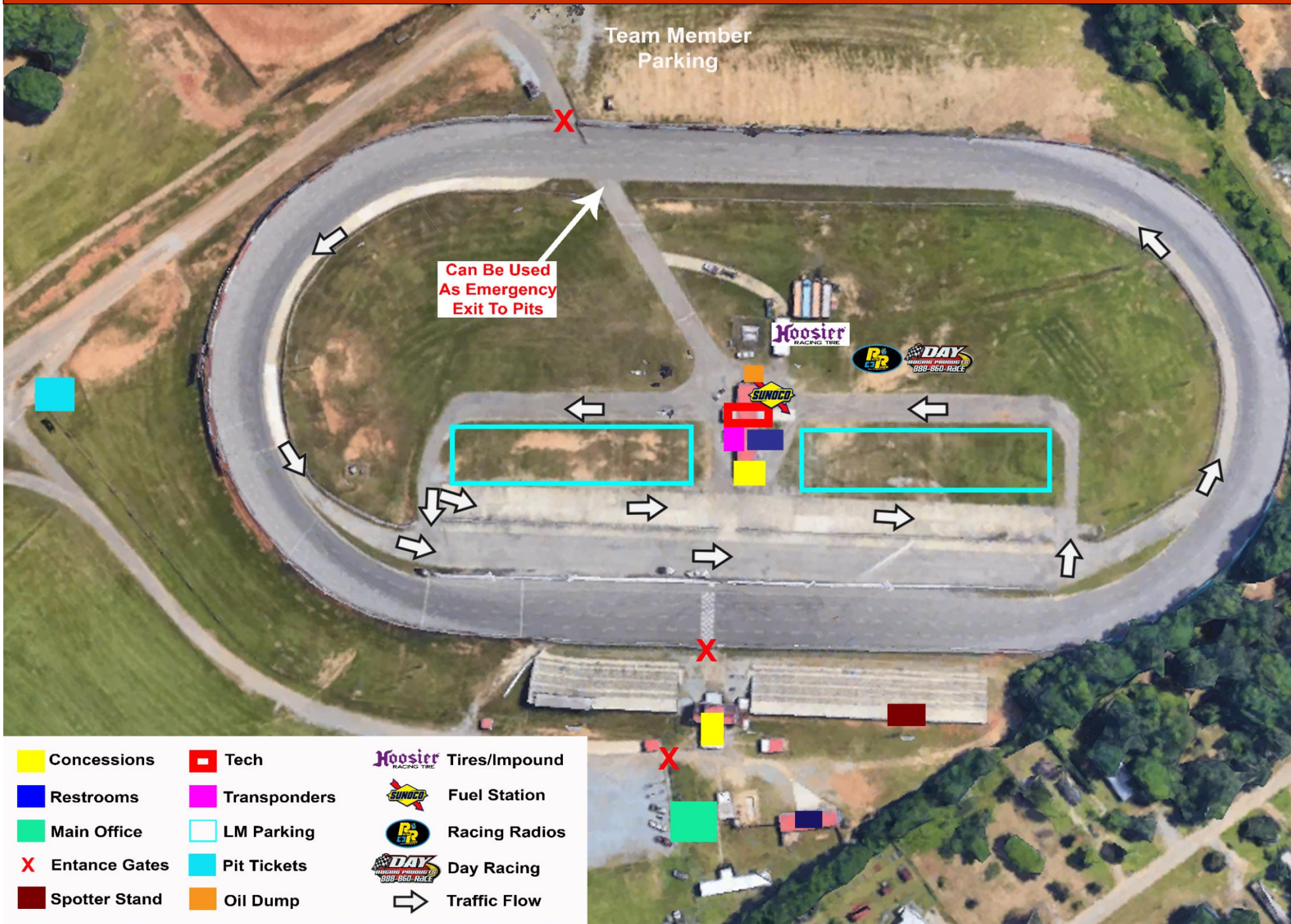
- If you need to ship items to the race track the address is 480 Booth Rd., Montgomery, AL 36108. Packages will be in tech for pickup.

Contact Info

- Main Office – 334-262-6101
- Stan Narrison General Manager – 678-910-7726
- Nicholas Rogers Competition Director – 850-418-0559



TRACK SERVICES / FACILITIES MAP



GENERAL PROCEDURES

- ALL CARS MUST HAVE A TRANSPONDER WHEN ON TRACK
- NO CELLPHONES, SMART WATCHES OR BLUETOOTH DEVICES ALLOWED IN CAR AT ANYTIME OR YOU WILL BE DISQUALIFIED!
- PLM MUST PURCHASE 15 GALLON MINIMUM OF SUNOCO FUEL BEFORE QUAL.
- MOM MUST PURCHASE 5 GALLON MINIMUM OF SUNOCO FUEL BEFORE QUAL.
- IF OFFICIALS OR SAFETY WORKERS ARE ON THE TRACK, NO SCUFFING TIRES NEAR THEM OR YOU WILL BE PARKED AFTER ONE WARNING.
- ALL CARS MUST USE APRONS TO BLEND ON AND OFF THE TRACK AT ALL TIMES. NO SCUFFING TIRES ON PIT LANE.
- MANDATORY SPOTTERS HAVE A SCANNER OR STAND-ALONE RADIO TO MONITOR RACE CONTROL ANYTIME CAR IS ON TRACK! ALL SPOTTERS THAT CAN NOT MONITOR RACE CONTROL WILL RESULT IN CAR BEING BLACK FLAGGED.
- ALL LEAD MUST BE SECURELY FASTENED AND PAINTED WHITE WITH CAR NUMBER ON EACH PIECE. LEAD WILL BE INSPECTED POST RACE. IF NOT CORRECTLY PAINTED AND NUMBERED TEAM WILL RECEIVE UP TO A \$1500.00 FINE. FOR 1ST OFFENSE. LOST WEIGHT WILL RESULT IN A \$25.00 PER POUND FINE

TIRE PURCHASING PROCEDURES

- **FRIDAY** 2:00-6:00 ALL PLM TEAMS THAT HAVE NOT ALREADY PURCHASED A SET OF PRACTICE TIRES FOR TESTING CAN PURCHASE ONE SET OF STICKER TIRES. MOM PRACTICE & RACE TIRES WILL BE AVAILABLE
- **SATURDAY** 10:30am PLM TEAMS WILL SELECT QUALIFYING AND RACE TIRES IN QUALIFYING ORDER. ALL TIRES WILL BE IMPOUNDED AFTER BEING MOUNTED. REMAINING MOM TEAMS CAN GET TIRES AFTER PLM SELECTION.

NOTES FOR FRI. MARCH 4th

- **YOU CAN PICK UP TRANSPONDER AND DRAW FOR QUALIFYING AT TECH SHED**
- **PLM/MOM CARS WILL PRE-TECH BY APPOINTMENT.**
- MAXIMUM OF 4 CREWMEMBERS PLUS THE DRIVER IN THE TECH SHED.
- SPOTTERS MUST BE USED ANYTIME THE CAR IS ON TRACK. SPOTTER SHOULD HAVE THE ABILITY TO MONITOR RACE CONTROL AT 461.2000
- TRACK CLOSES AT 8:00pm

NOTES FOR SAT. MARCH 5th

- PLM/MOM TEAMS THAT DID NOT TECH FRIDAY WILL TECH STARTING AT 10:00
- PLM QUALIFYING AND RACETIRE SELECTION IS AT 10:30
- **MANDATORY DRIVER/CREWCHIEF/SPOTTER MEETING IS AT 11:30. FAILURE TO BE ON TIME WHEN ROLL IS CALLED MAY RESULT IN PRACTICE TIME HOLD.**
- WE WILL RELEASE THE SECOND SET OF TIRES AT **2:10** FOR ANY TEAMS WANTING TO USE THEM FOR A MOCK RUN. ALL TIRES MUST BE RETURNED TO IMPOUND BY **3:00** OR FACE PENALTIES. TIRES CANNOT GO IN TRAILER.
- ANY TECH ISSUES MUST BE CORRECTED AND BROUGHT BACK FOR INSPECTION BY **3:00**. FAILURE TO DO SO MAY RESULT IN YOU RECEIVING THE SLOWEST OF TWO QUALIFYING LAPS
- **PLM QUALIFYING TECH:** PLM QUALIFYING TECH OPENS AT **3:30**. ALL CARS MUST BE ON THE GROUND AT THAT TIME. YOU WILL BE DIRECTED WHEN TO HEAD TO TECH. YOU WILL HAVE TWO OPPORTUNITIES TO PASS TECH, BEFORE YOU ARE UNDER PENALTY OF SLOWEST OF TWO LAPS IN QUALIFYING.
- **MOM QUALIFYING TECH:** MOM WILL GO TO TECH AS THEY COME OFF THE RACETRACK AFTER QUALIFYING. RF CARBURETOR STUD MUST BE DRILLED FOR SEAL. NO ALLOWANCE WILL BE GIVEN FOR LEFT SIDE WEIGHT.
- **POST QUALIFYING IMPOUND:** ALL CARS WILL BE IMPOUNDED AFTER QUALIFYING, ONLY 2 PEOPLE MAY CHECK PRESSURES, STAGGER (NO JACKS) AND REMOVE TAPE – WE MAY CHECK ITEMS IN IMPOUND. CREW SHOULD BE PREPARED TO FACILITATE AND TECH ITEMS REQUESTED.
- TOP 8 QUALIFIERS FOR BOTH DIVISIONS WILL REDRAW FOR STARTING POSITION DURING OPENING CEREMONIES.
- **ALABAMA 200: (8) TIRES, 200 LAPS FIRST 3 CAUTION LAPS COUNT,** YOU WILL BE ALLOWED TWO SCUFFS IN YOUR PIT AREA FOR FLATS ONLY BEFORE LAP 100. FLATS MUST BE INSPECTED AND APPROVED BY AN OFFICIAL BEFORE TIRE IS TOUCHED BY A CREW MEMBER UNLESS IT'S ON THE RIM - AN UNAPPROVED TIRE CHANGE WILL RESULT IN A 2 LAP PENALTY PER TIRE. WE WILL USE CONTROLLED CAUTIONS FOR THIS EVENT.
- **MOM 58: (4) TIRES, 58 LAPS,** YOU CAN HAVE TWO SCUFFS IN YOUR PITS FOR FLATS. FLATS MUST BE INSPECTED AND APPROVED BY AN OFFICIAL BEFORE TIRE IS TOUCHED BY A CREW MEMBER UNLESS IT'S ON THE RIM - AN UNAPPROVED TIRE CHANGE WILL RESULT IN A 2 LAP PENALTY PER TIRE.
- **POST RACE:** TOP 3 TO VICTORY LANE, 4TH AND 5TH TO TECH STATION AND DRIVER MUST STAY AND DRIVE CAR TO TECH STATION UNTIL THEY CLEAR THE SCALES.



2022 ALABAMA 200 RACE PROCEDURES

Event:

The PLM race is 200 laps counting **FIRST THREE** caution laps. MOM race is 58 green. The last five laps must be green, but do not have to be consecutive. The event can go over the advertised number of laps to facilitate finish. If red flag is thrown once the leader has taken the white flag there will be a green, white, checker restart. The event is completed after three green, white, checker restarts

Start:

Initial start will be in the box on the front straight. Flagman will start the race. Front row should stay side by side until the green waves. Jumping the start will result in a black flag for a pass-through penalty. If a caution occurs before the completion of the first lap there will be a complete restart. All cars retain position unless they pit or receive assistance. On a complete restart if a car drops out or goes to the rear that line will just advance forward.

Yellow Flags:

First three caution laps will count in PLM. You **cannot** lose a lap under caution. Do not race back to yellow. Get single file behind pace car. No scuffing around workers on track. You will receive one warning thru your spotter, any further issues and you will be parked for the remainder of the event. If you are involved, spin, slowed or your progress is disrupted by the incident, you will be positioned where you rejoin or blend back into the field – NOTE: the incident must play itself out before the order is set. If you pit and don't rejoin the field in your proper position at tail of the line before one to go, you will restart at the back of field. Any discrepancies in line up will be determined by Race Control or may revert to the last completed green lap. Should a car not maintain caution speed for any reason, stops or enters the pits during a yellow, it will lose its running position. You must maintain your position under yellow and stay nose to tail. If a driver deliberately picks up positions after the yellow flag is displayed, they may be penalized. Pace car will pick up field in turn 2. Pits are closed until lineup is established. PLM will use controlled cautions for this event. MOM pit road open second time by, please see controlled caution procedures below. Pace car and pit road speed is 35mph. Pit Road speed will be checked and enforced.

Red Flags:

Stop as quickly and safely as possible. Pits are closed. No working on car on track and no crew members allowed on track. When track is clear field will move under yellow and lineup will be corrected. Penalty for pitting under red is restart at tail of the line. Must have approval before coming to pit road.

Restarts:

All lap cars must drop behind lead lap cars at two to go. A "lucky dog" will be awarded to the highest car on track laps down at time of the caution. Must restart on tail. No "lucky dog" will be given in the last 10 laps or if the eligible car was involved in the caution. At one to go the leader can choose inside or outside everyone else double up inside/outside. In the event restarts become an issue officials reserve the right to implement single file restarts with lap cars at rear. The leader is the control car and restarts the race inside the box. If you jump the start or play

games, you will be black flagged and must serve a pass thru penalty at pit road speed. Once pace car leaves field front row should gradually increase speed without slowing back down until leader reaches the box. No swerving, brake checking, laying back, or games of any kind will be tolerated. Stay in line. Do not advance your position before the start finish line. No three wide into turn one on a restart.

Finish:

Once the white flag is displayed, we are coming to a checkered unless the track is blocked. If track is blocked, we will go red and revert to last lap. We will finish with a green/white/checkered.

Penalties:

If you stop on track or intentionally create a caution you will lose a minimum of two laps naturally or by penalty. Taking race tires other than during controlled cautions unless approved is a 2-lap penalty. Three unassisted spins or multiple avoidable incidents and you will be parked for the remainder of the event.

Spotters:

Spotters are required in designated area during race. Spotter must check in with official for car to be able to compete. Should have car number clearly visible. If spotter leaves for any reason the car will be black flagged.

Spotters should have the ability to monitor race control at 461.2000 anytime the car is on track.

Controlled Cautions:

This event will use Controlled Cautions up to lap 190 unless declared a quickie yellow. **You can only take tires during controlled cautions unless for an approved flat.** A quickie yellow may be used if we have not completed 25 laps since the last controlled caution for an issue that can be cleared quickly. Controlled Cautions will consist of a 3-Lap grace period to pit for service without losing positions to cars that pit at the same time. Once lineup is established race control will announce pit road open next time and pit open flagman will show green. You can enter pit road when you get to entrance. Do not advance. That 3-lap grace period is only the first three laps that pit road is open after the cars have been brought to pit road. After the grace period, cars will lose positions. When pitting under a Controlled Caution, the cars that pit the first time by will return to the track in the same order they were scored running in the race prior to coming to pit road, relative to the other cars that pitted, and will line up behind the cars that did not pit, as long as they return to the track within the stated 3 lap window. Any car that pits and does not return to the track prior to the field receiving the "one to go" signal must restart at the tail of all cars. If we run 75 laps from controlled caution we will have a mandatory caution. Quickie cautions do not reset this window.

MMS reserves the right to make final rule decisions or to amend rules as deemed necessary. All decisions are final.



RACE PROCEDURES CONTINUED



Thank you for being a part of the Alabama 200



Please support our partners that help make this possible

