



2020 Winner Jake Garcia

57th Annual Alabama 200

COMPETITOR INFORMATION

MONTGOMERY MOTOR SPEEDWAY – MARCH 5-6, 2021



SCHEDULE/EVENT INFO

Friday, March 12th

1:00 Pit Gate Opens

2:00-6:00 Tires and Fuel Available

3:00-7:00 Tech Open

2:00-7:00 Rotating Practice

8:00 Pit Area Closes

Saturday, March 13th

10:00 Pit Gate Opens

10:15-1:45 Ala 200/MOM Pre-Tech & Registration Open

10:30 Ala 200 Qualifying Tire Selection

11:30 Mandatory Driver/Crew Chief/Spotter Meeting

12:30-1:00 Modifieds of Mayhem Practice

1:00-1:30 Ala 200 Practice

1:30-2:00 Modifieds of Mayhem Practice

2:00-2:30 Ala 200 Practice

2:00 Ala 200 / MOM Tech Closes For Rechecks

2:30 Modifieds of Mayhem Qualifying Tech Opens

3:30 Ala 200 Qualifying Tech Opens

2:45 Mini Cup Drivers Meeting

3:15-3:30 Mini Cup Practice

3:45-4:00 Mini Cup Practice/Qualifying

4:00 Grandstand Opens

4:30 Modifieds of Mayhem Qualifying

5:00 Alabama 200 Qualifying

5:45 Opening Ceremonies

6:30 Features

Modifieds of Mayhem 57 laps

57th Annual Alabama 200 200 laps

Mini Cup 20 Laps

Hauler Parking & Pit Ticket Sales

- Hauler staging will be in main lot thru the night. Please do not block driveways.
- Pit ticket sales will be open on Friday from 12:30-6pm and Saturday from 9:30am-until. Please fill out a team form and leave an open check for team members arriving separately. Pit Pay will also be available for pre purchase

Pit Stalls

- Pit stalls are on a first come first serves basis. If you need to arrange special parking call track for more info.

Golf Carts

- Golf Carts/ATV's are allowed. Use can be revoked for reckless use or blocking active areas. Limit one vehicle per team.

Covid Precautions

- All teams will be asked to have masks for all crew members to be worn when social distancing is not practical.
- Please stay with your group when possible

UPS/FEDEX

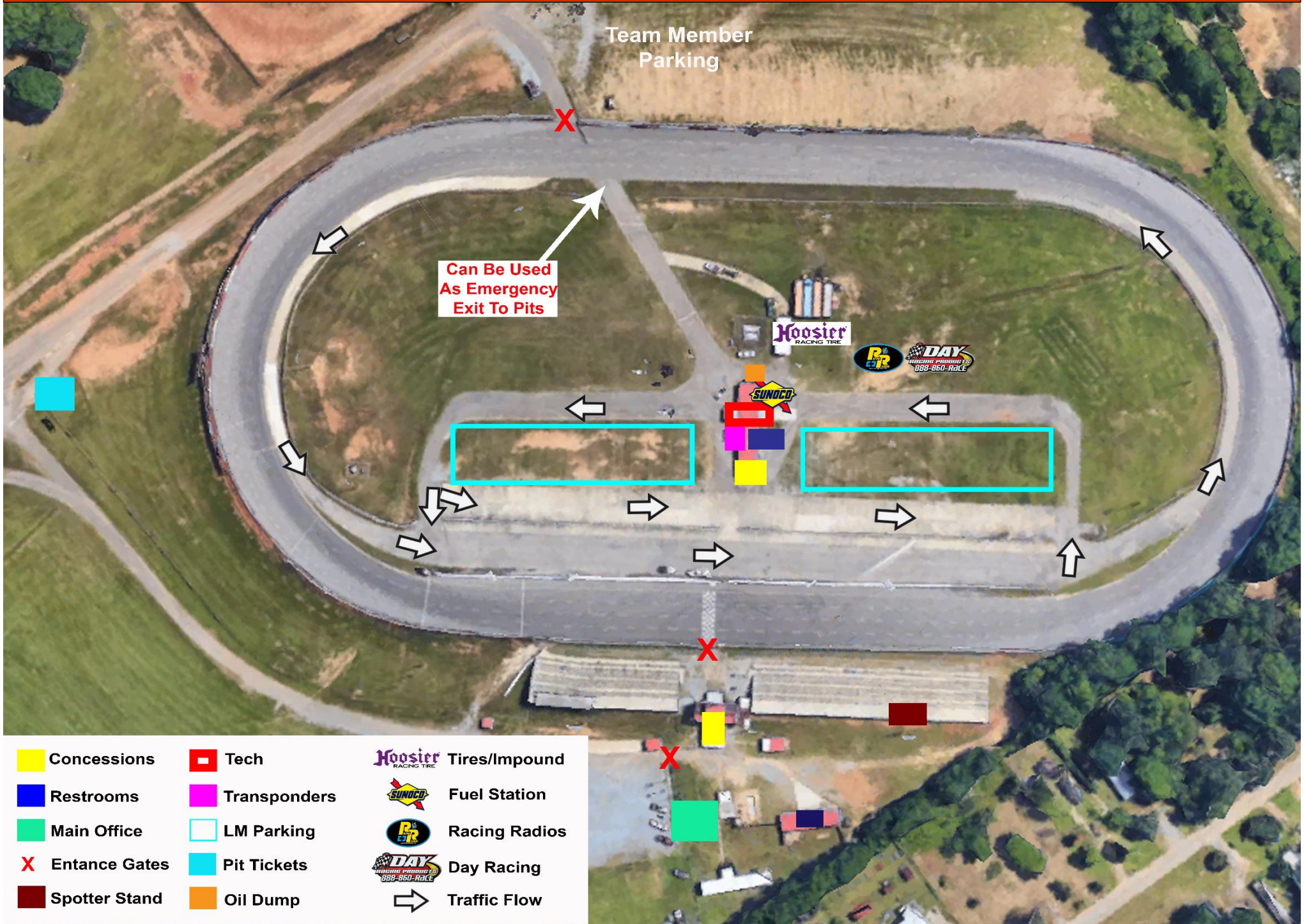
- If you need to ship items to the race track the address is 480 Booth Rd., Montgomery, AL 36108. Packages will be in tech for pickup.

Contact Info

- Main Office – 334-262-6101
- Stan Narrison General Manager – 678-910-7726
- Nicholas Rogers Race Director – 850-418-0559
- Ricky Brooks Tech Director – 850-324-6821



TRACK SERVICES / FACILITIES MAP



GENERAL PROCEDURES

- ALL CARS MUST HAVE A TRANSPONDER WHEN ON TRACK
- **NO CELLPHONES, SMART WATCHES OR BLUETOOTH DEVICES ALLOWED IN CAR AT ANYTIME OR YOU WILL BE DISQUALIFIED!**
- PLM MUST PURCHASE 15 GALLON MINIMUM OF SUNOCO FUEL BEFORE QUAL.
- MOM MUST PURCHASE 5 GALLON MINIMUM OF SUNOCO FUEL BEFORE QUAL.
- **IF OFFICIALS OR SAFETY WORKERS ARE ON THE TRACK, NO SCUFFING TIRES NEAR THEM OR YOU WILL BE PARKED AFTER ONE WARNING.**
- ALL CARS MUST USE APRONS TO BLEND ON AND OFF THE TRACK AT ALL TIMES. NO SCUFFING TIRES ON PIT LANE.
- **MANDATORY SPOTTERS HAVE A SCANNER OR STAND-ALONE RADIO TO MONITOR RACE CONTROL ANYTIME CAR IS ON TRACK!** ALL SPOTTERS THAT CAN NOT MONITOR RACE CONTROL WILL RESULT IN CAR BEING BLACK FLAGGED.
- **ALL LEAD MUST BE SECURELY FASTENED AND PAINTED WHITE WITH CAR NUMBER ON EACH PIECE. LEAD WILL BE INSPECTED POST RACE. IF NOT CORRECTLY PAINTED AND NUMBERED TEAM WILL RECEIVE UP TO A \$1500.00 FINE. FOR 1ST OFFENSE. LOST WEIGHT WILL RESULT IN A \$25.00 PER POUND FINE**

TIRE PURCHASING PROCEDURES

- **FRIDAY** 2PM-6PM PRACTICE TIRES & MOM RACE TIRES WILL BE AVAILABLE
- **SATURDAY** 10AM-10:30AM PRACTICE TIRES. 10:30AM PLM RACE TIRE SELECTION REMAINING MOM TEAMS CAN GET RACE TIRES AFTER PLM TIRE SELECTION

NOTES FOR FRIDAY MARCH 5TH

- ALL CARS MUST ROLL THRU TECH BY APPOINTMENTS IF PRESENT OR SUBJECT TO A PENALTY.
- MAXIMUM OF FOUR CREW MEMBERS PLUS THE DRIVER IN THE TECH AREA AT ANY TIME.
- SPOTTER MUST BE UTILIZED ANYTIME YOUR CAR IS ON THE TRACK. MANDATORY ALL SPOTTERS HAVE A SCANNER OR STAND-ALONE RADIO TO MONITOR RACE CONTROL AT ALL TIMES.
- TRACK CLOSES AT 8:00PM.

NOTES FOR SATURDAY MARCH 6th

- PRO LATE MODEL QUALIFYING TIRE SELECTION AT 10:30AM
- **11:30AM MANDATORY DRIVER/SPOTTER MEETING (MUST BE ON TIME OR SLOWEST OF 2 QUALIFYING LAPS).**

NOTES FOR SAT. MARCH 6th CONT.

- THE SET OF TIRES THAT YOU WILL PUT ON DURING THE RACE WILL BE RELEASED AT 1:45PM IF BEING USED FOR MOCK QUALIFYING RUNS DURING THE 2:00PM – 2:30PM PRACTICE SESSION, TIRES MUST STAY OUTSIDE IN PLAIN VIEW AND MUST BE RETURNED TO IMPOUND BEFORE QUALIFIERS WILL BE RELEASED.
- **PRO QUALIFYING TIRE RELEASE WILL BE AT 3:00PM**, ALL TIRES MUST GO DIRECTLY TO PITLANE FROM IMPOUND AND STAY BEHIND THE CAR IN PLAIN VIEW AT ALL TIMES AND AT NO TIME GO INTO TRAILER.
- ALL TECH ISSUES MUST BE FIXED AND MARKED OFF BY 2:00PM ON SATURDAY OR SLOWEST OF TWO QUALIFYING LAPS.
- **PRE-QUALIFYING TECH:** PRE-QUALIFYING TECH OFFICIALLY OPENS @ **MODIFIEDS 2:30PM** AND **PRO 3:30PM**, ALL CARS ARE REQUIRED TO BE ON THE GROUND UNLESS YOU ARE ON AN APPROVED MECHANICAL BY RICKY AND READY TO ROLL TO TECH AT THESE TIMES OR YOU ARE UNDER PENALTY OF SLOWEST OF TWO LAPS IN QUALIFYING. PLEASE WAIT UNTIL YOU ARE DIRECTED TO PROCEED IN ORDER TO PRE-QUALIFYING TECH LINE. YOU WILL HAVE TWO OPPORTUNITIES TO PASS TECH, BEFORE YOU ARE UNDER PENALTY OF SLOWEST OF TWO LAPS IN QUALIFYING.
- **GENERATORS WILL NOT BE ALLOWED BEFORE QUALIFYING OR WHILE CARS ARE IN IMPOUND.**
- **POST QUALIFYING IMPOUND:** ALL CARS WILL BE IMPOUNDED AFTER QUALIFYING, ONLY 2 PEOPLE MAY CHECK PRESSURES, STAGGER (NO JACKS) AND REMOVE TAPE – WE WILL CHECK FUEL ON THE TOP 5 QUALIFIERS, CREW MEMBERS NEED TO BE THERE WITH TOOLS READY FOR A FUEL CHECK.
- TOP 8 QUALIFIERS IN BOTH MODIFIED AND PRO FOLLOWING QUALIFYING NEED TO BE AT OPENING THE CEREMONIES FOR REDRAW.
- **MODIFIED OF MAYHEM 57: (4) TIRE 57 LAPS, FLATS MUST BE INSPECTED AND APPROVED BY AN OFFICIAL BEFORE TIRE IS TOUCHED BY A CREW MEMBER UNLESS IT'S ON THE RIM, SCUFFS ONLY . AN UNAPPROVED TIRE CHANGE WILL RESULT IN A 2 LAP PENALTY PER TIRE. SLOW GROOVE WILL BE BOTTOM LANE.**
- **57TH ALABAMA 200 : (8) TIRES, 200 LAPS**, 1 JACK, 2 AIR GUNS AND 5 PEOPLE MAXIMUM ALLOWED PER PIT STOP ON PIT ROAD ONLY, FLATS MUST BE INSPECTED AND APPROVED BY AN OFFICIAL BEFORE TIRE IS TOUCHED BY A CREW MEMBER UNLESS IT'S ON THE RIM - AN UNAPPROVED TIRE CHANGE WILL RESULT IN A 2 LAP PENALTY PER TIRE. SLOW GROOVE WILL BE ON THE BOTTOM LANE. (2) SCUFFS TO BE USED FOR FLATS ONLY PRIOR TO LAP 100 WITH AN OFFICIAL'S APPROVAL WILL BE PLACED BY CONCESSION STAND.
- **POST RACE:** TOP 3 TO VICTORY LANE, 4TH AND 5TH TO TECH STATION AND DRIVER MUST STAY AND DRIVE CAR TO TECH STATION UNTIL HE CLEARS THE SCALES.



ALABAMA 200 RACE PROCEDURES

Event:

- The race is 200 laps counting **FIRST THREE** caution laps plm/57 green laps MoM The last five laps must be green, but do not have to be consecutive. The event can go over the advertised number of laps to facilitate finish. If red flag is thrown once the leader has taken the white flag there will be a green, white, checker restart. The event is completed after three green, white, checker restarts

Start:

- Initial start will be in the box on the front straight. Flagman will start the race. Front row should stay side by side until the green waves. Jumping the start will result in a black flag for a pass through penalty.
- If a caution occurs before the completion of the first lap there will be a complete restart. All cars retain position unless they pit or receive assistance from the safety crew.
- On a complete restart if a car drops out or goes to the rear that line will just advance forward.

Yellow Flags:

- First three caution laps will count. You **cannot** lose a lap under caution.
- Do not race back to yellow. Get single file behind pace car. No scuffing around workers on track. You will receive one warning thru your spotter, Any further issues and you will be parked for the remainder of the event.
- If you are involved, spin, slowed or your progress is disrupted by the incident, you will be positioned where you rejoin or blend back into the field – NOTE: the incident must play itself out before the order is set. If you pit and don't rejoin the field in your proper position at tail of the line before one to go, you will restart at the back of Field
- Any discrepancies in line up will be determined by Race Control or may revert to the last completed green lap.
- Should a car not maintain caution speed for any reason, stops or enters the pits during a yellow, it will lose its running position. You must maintain your position under yellow and stay nose to tail.
- If a driver deliberately picks up positions after the yellow flag is displayed, they may be penalized.
- Pace car will pick up field in turn 2. Pits are closed until lineup is established.
- PLM will use controlled cautions for this event. Please see controlled caution procedures below. Pits open second time by for MoM
- Pace car and pit road speed is 35mph. Pit road speed will be checked and enforced.

- **You can only take tires under controlled cautions unless for an approved flat.**
- If we run 75 consecutive green laps a caution will be displayed. There will be no mandatory caution after lap 190.

Red Flags:

- Stop as quickly and safely as possible. Pits are closed
- No working on car on track and no crew members allowed on track.
- When track is clear field will move under yellow and lineup will be corrected
- Penalty for pitting under red is restart at tail of the line. Must have approval before coming to pit road.

Restarts:

- All lap cars must drop behind lead lap cars at one to go.
- A "lucky dog" will be awarded to the highest car on track laps down at time of the caution. Must restart on tail
- No "lucky dog" will be given in the last 10 laps or if the eligible car was involved in the caution.
- At one to go the leader can choose inside or outside everyone else double up inside/outside. In the event restarts become an issue officials reserve the right to implement single file restarts with lap cars at rear.
- The leader is the control car and restarts the race inside the box. If you jump the start or play games you will be black flagged and must serve a pass thru penalty at pit road speed.
- Once pace car leaves field front row should gradually increase speed without slowing back down until leader reaches the box. No swerving, brake checking, laying back, or games of any kind will be tolerated.
- Stay in line. Do not advance your position before the start finish line. No three wide into turn one on a restart.

Finish:

- Once the white flag is displayed we are coming to a checkered unless the track is blocked.
- If track is blocked we will go red and revert to last lap. We will finish with a green/white/checkered.



RACE PROCEDURES CONTINUED

Penalties:

- If you stop on track or intentionally create a caution you will lose a minimum of two laps naturally or by penalty.
- Taking race tires other than during controlled cautions unless approved is a 2 lap penalty.
- Three unassisted spins or multiple avoidable incidents and you will be parked for the remainder of the event.

Spotters:

- Spotters are required in designated area during race. Spotter must check in with official for car to be able to compete. Should have car number clearly visible. If spotter leaves for any reason the car will be black flagged.
- Spotters should have the ability to monitor race control at 461.2000 anytime the car is on the track.

Controlled Cautions:

- This event will use Controlled Cautions up to lap 190 unless declared a quickie yellow. **You can only take tires during controlled cautions unless for an approved flat.** A quickie yellow may be used if we have not completed 25 laps since the last controlled caution for an issue that can be cleared quickly. Controlled Cautions will consist of a 3-Lap grace period to pit for service without losing positions to cars that pit at the same time. Once lineup is established race control will announce pit road open next time and pit open flagman will show green. You can enter pit road when you get to entrance. Do not advance. That 3-lap grace period is only the first three laps that pit road is open after the cars have been brought to pit road. After the grace period, cars will lose positions. When pitting under a Controlled Caution, the cars that pit the first time by will return to the track in the same order they were scored running in the race prior to coming to pit road, relative to the other cars that pitted, and will line up behind the cars that did not pit, as long as they return to the track within the stated 3 lap window. Any car that pits and does not return to the track prior to the field receiving the "one to go" signal must restart at the tail of all cars.



Thank you for being a part of the 57th Annual Alabama 200



Please support our partners that help make this possible

