



2022 Spring Fling Winner Jake Garcia

Disturbing The Peace 100

COMPETITOR INFORMATION

MONTGOMERY MOTOR SPEEDWAY – May 28, 2022



SCHEDULE/EVENT INFO

Frida May 27th

- 3:00 Pit Gate Opens
- 3:30 Tire and Qualifying Draw
- 4:00-7:00 Open Practice
- 8:00 Pit Area Closes

Saturday May 28th

- 11:30 Pit Tickets Open
- 12:00 Pit Gate & Track Services Open
- 1:45 Pro LM Mandatory Drivers Meeting
- 2:30-3:15 Pro Late Model Practice #1
- 3:30-4:00 Pro Late Model Practice #2
- 4:00 SS/LMS Drivers Meeting
- 4:30 Pro Late Model Qualifying Tech
- 4:30-5:15 Local Practice 1
- 5:15-6:00 SS/LMS Practice 2/Group Qualifying
- 5:00 Grandstands Open
- 6:00 Qualifying
 - LMS
 - Pro Late Models
- 6:45 Opening Ceremonies
- 7:00 Features
 - Street Stocks
 - Pro Late Models
 - Late Model Sportsman
 - Road Runners

Hauler Parking & Pit Ticket Sales

- Hauler staging will be in main lot Friday night. Please do not block driveways.
- Pit ticket sales will be open Saturday from 11:30pm-until. Please fill out a team form and leave an open check for team members arriving separately.

Pit Stalls

- Pit stalls are on a first come first serves basis. If you need to arrange special parking call track for more info.

Golf Carts

- Golf Carts/ATV's are allowed. Use can be revoked for reckless use or blocking active areas. Limit one vehicle per team.

UPS/FEDEX

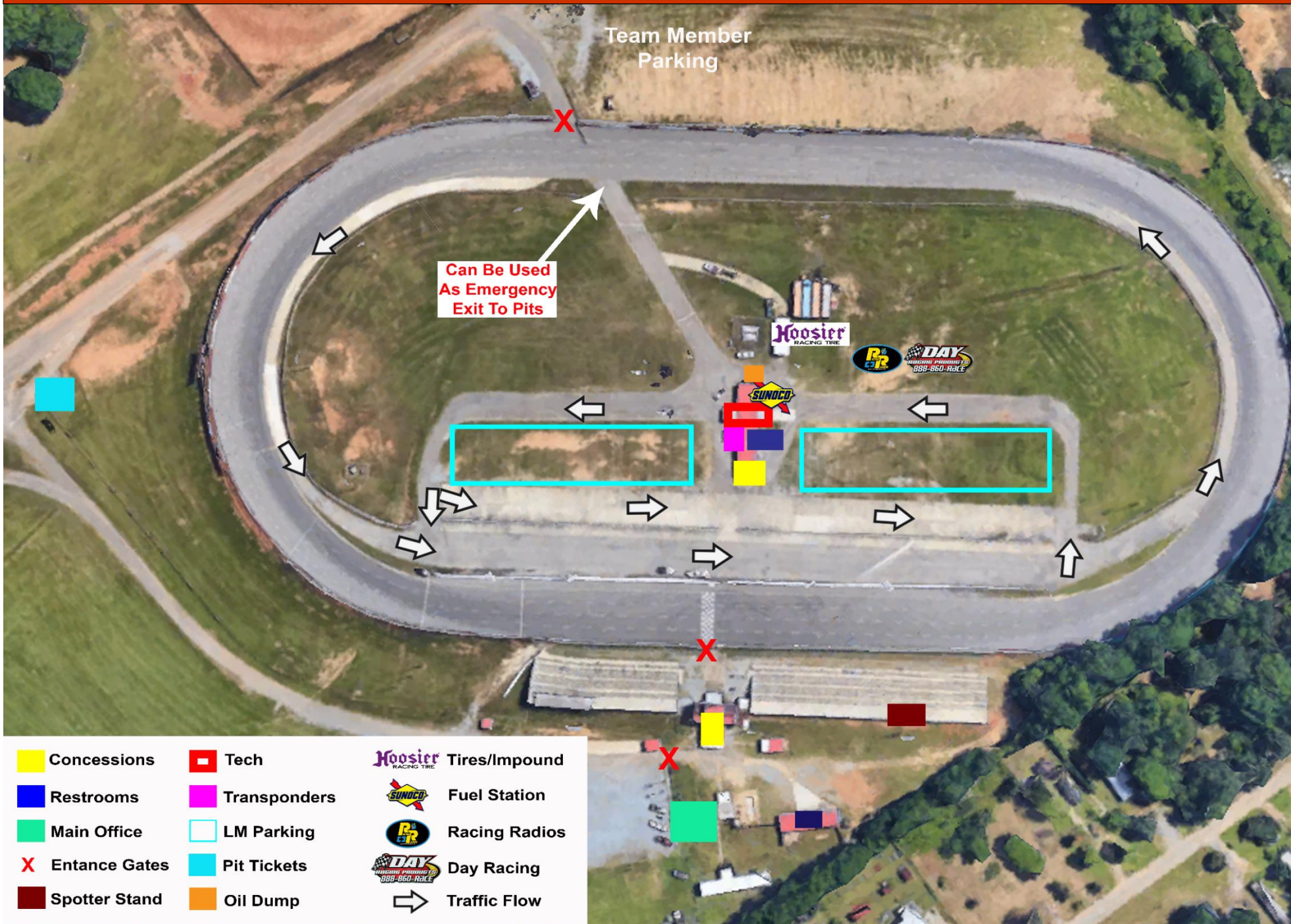
- If you need to ship items to the race track the address is 480 Booth Rd., Montgomery, AL 36108. Packages will be in tech for pickup.

Contact Info

- Main Office – 334-262-6101
- Stan Narrison General Manager – 678-910-7726
- Nicholas Rogers Competition Director – 850-418-0559



TRACK SERVICES / FACILITIES MAP



GENERAL PROCEDURES

- **NO CELLPHONES, SMART WATCHES OR BLUETOOTH DEVICES ALLOWED IN CARS AT ANYTIME OR THIS IS AN AUTOMATIC DISQUALIFICATION.**
- NO TAPE ALLOWED ON CAR EXCEPT GRILL SCREEN & FRONT BRAKE DUCTS.
- **PER THE 2022 RULEBOOK NO COOL DOWN UNITS OF ANY TYPE PERMITTED AND WILL BE SUBJECT TO A SEVERE PENALTY.**
- ALL TECH ISSUES MUST BE FIXED AND MARKED OFF BY END OF PRACTICE OR POSSIBLE PENALTY OF THE SLOWEST OF THE TWO QUALIFYING LAPS.
- YOU WILL DRAW FOR QUALIFYING AND TIRE SELECTION AT 3:30 ON FRIDAY.
- **MUST PURCHASE 10 GAL MINIMUM OF SUNOCO FUEL BEFORE QUAL.**
- ALL CARS MUST HAVE A TRANSPONDER WHEN ON TRACK SATURDAY
- ALL TIRES IN THE IMPOUND AREA WILL BE STACKED 4 HIGH OR YOU WILL LOSE THEM! YOUR ONLY ALLOWED A TIRE GAUGE, TIRE TAPE AND AIR HOSE IN THE IMPOUND AREA. IT'S MANDATORY THAT YOUR CAR NUMBER BE ON WHEELS WITH A DECAL, NO PAINT PENS ETC....
- ALL CARS MUST RUN SMTMS WINDSHIELD BANNER
- ALL CARS MUST USE APRONS TO BLEND ON AND OFF THE TRACK AT ALL TIMES. NO SCUFFING TIRES ON PIT LANE.
- **MANDATORY SPOTTERS HAVE A SCANNER OR STAND-ALONE RADIO TO MONITOR RACE CONTROL ANYTIME CAR IS ON TRACK! ALL SPOTTERS THAT CAN NOT MONITOR RACE CONTROL WILL RESULT IN CAR BEING BLACK FLAGGED. NO GUESTS OR SMOKING WILL BE PERMITTED IN SPOTTERS STAND. FREQ 461.2000**
- **IN THE EVENT OF RAIN, WE MAY USE RACEDAY PRACTICE TO SET LINEUP AND THEN HAVE THE TOP 8 REDRAW FOR STARTING POSITIONS.**
- NO CREW MEMBERS ARE ALLOWED ON THE RACING SURFACE ANYTIME THE TRACK IS HOT. THIS CAN RESULT IN THE CREW MEMBER BEING REMOVED FROM THE PITS.
- **IF OFFICIALS OR SAFETY WORKERS ARE ON THE TRACK, NO SCUFFING TIRES NEAR THEM OR YOU WILL BE PARKED AFTER ONE WARNING.**
- ALL LEAD MUST BE SECURELY FASTENED & PAINTED WHITE WITH CAR NUMBER ON EACH PIECE. LEAD WILL BE INSPECTED POST RACE. IF NOT PAINTED AND NUMBERED TEAM WILL RECEIVE UP TO A \$1500.00 FINE. FOR 1ST OFFENSE. LOST WEIGHT WILL RESULT IN A \$25.00 PER POUND FINE

TIRE PURCHASING PROCEDURES

- **TIRE SELECTION DRAW WILL BE ON FRIDAY AT 3:30. YOU WILL DRAW FOR QUALIFYING AND THE NUMBER YOU DRAW WILL BE THE TIRE STACK YOU GET. EACH TIRE STACK WILL HAVE 4 RIGHT SIDE AND 4 LEFT SIDE TIRES.**
- RACE TIRES – WILL BE KEPT IN IMPOUND UNTIL QUALIFYING TECH

NOTES FOR SAT. MAY 28th

- **1:45 MANDATORY DRIVER/SPOTTER MEETING (WILL HAVE QUALIFYING DRAW WHEN CALLING ROLL. IF LATE YOU WILL QUALIFY FIRST).**
- **ALL CARS MUST GO THRU PRE-TECH BY 3:15**
- ALL TECH ISSUES MUST BE FIXED AND MARKED OFF BY 4:00 OR SLOWEST OF TWO QUALIFYING LAPS
- **PRO QUALIFYING TIRE RELEASE WILL BE AT 4:15PM**, ALL TIRES MUST GO DIRECTLY TO PITLANE FROM IMPOUND AND STAY BEHIND THE CAR IN PLAIN VIEW AT ALL TIMES AND AT NO TIME GO INTO TRAILER.
- **PRE-QUALIFYING TECH:** PRE-QUALIFYING TECH OFFICIALLY OPENS @ **4:30**, ALL CARS ARE REQUIRED TO BE ON THE GROUND (UNLESS YOUR ON AN APPROVED MECHANICAL BY TECH) AND READY TO ROLL TO TECH AT THIS TIME OR YOU COULD BE PENALIZED TO SLOWEST OF TWO LAPS IN QUALIFYING. PLEASE WAIT UNTIL YOU ARE DIRECTED BY AN OFFICIAL TO PROCEED IN ORDER TO PRE-QUALIFYING TECH LINE. YOU WILL HAVE TWO OPPORTUNITIES TO PASS TECH, BEFORE YOU ARE UNDER PENALTY OF SLOWEST OF TWO LAPS IN QUALIFYING.
- **POST QUALIFYING IMPOUND:** ALL CARS WILL BE IMPOUNDED AFTER QUALIFYING, 2 PEOPLE MAY CHECK PRESSURES, STAGGER (NO JACKS) AND REMOVE TAPE
- TOP 8 QUALIFIERS FOLLOWING QUALIFYING NEED TO BE AT OPENING CEREMONIES FOR REDRAW
- **100 LAPS : (4) TIRES MAX**, YOU WILL BE ALLOWED TWO SCUFFS IN YOUR PIT AREA FOR FLATS ONLY. FLATS MUST BE INSPECTED AND APPROVED BY AN OFFICIAL BEFORE TIRE IS TOUCHED BY A CREW MEMBER UNLESS IT'S ON THE RIM - AN UNAPPROVED CHANGE WILL RESULT IN A 2 LAP PENALTY PER TIRE.
- **POST RACE: TOP 3 TO VICTORY LANE**, THEN DIRECTLY TO TECH STATION. DRIVERS MUST DRIVE CAR TO TECH STATION AND REMAIN WITH CAR UNTIL HE CLEARS THE SCALES.



SHOW ME THE MONEY SERIES RACE PROCEDURES

Event:

- The race is 100 green flag laps. MMS reserves the right to count cautions. The last five laps must be green, but do not have to be consecutive. The event can go over the advertised number of laps to facilitate finish. If red flag is thrown once the leader has taken the white flag there will be a green, white, checker restart. The event is completed after three green, white, checker restarts.

Start:

- Initial start will be in the box on the front straight. Flagman will start the race. Front row should stay side by side until the green waves. Jumping the start will result in a black flag for a pass-through penalty.
- If a caution occurs before the completion of the first lap there will be a complete restart. All cars retain position unless they pit or receive assistance from the safety crew.
- On a complete restart if a car drops out or goes to the rear that line will just advance forward.

Yellow Flags:

- You **cannot** lose a lap under caution.
- Do not race back to yellow. Get single file behind pace car. No scuffing around workers on track. You will receive one warning thru your spotter, any further issues and you will be parked for the remainder of the event.
- If you are involved, spin, slowed or your progress is disrupted by the incident, you will be positioned where you rejoin or blend back into the field – NOTE: the incident must play itself out before the order is set. If you pit and do not rejoin the field in your proper position at tail of the line before one to go, you will restart at the back of Field.
- Any discrepancies in line up will be determined by Race Control or may revert to the last completed green lap.
- Should a car not maintain caution speed for any reason, stops or enters the pits during a yellow, it will lose its running position. You must maintain your position under yellow and stay nose to tail.
- If a driver deliberately picks up positions after the yellow flag is displayed, they may be penalized.
- Pace car will pick up field in turn 2. Pit road opens second time by behind the pace car.
- Pace car and pit road speed is 35mph. Pit Road speed will be checked and enforced.

Lap Cars:

- Lap cars should go the top and give lead lap cars the bottom lane.

Red Flags:

- Stop as quickly and safely as possible. Pits are closed.
- No working on car on track and no crew members allowed on track.
- When track is clear field will move under yellow and lineup will be set.

- Penalty for pitting under red is restart at tail of the line. Must have approval before coming to pit road.

Restarts:

- All lap cars must drop behind lead lap cars at one to go.
- A “lucky dog” will be awarded to the highest car on track laps down at time of the caution. Must restart on tail.
- No “lucky dog” will be given in the last 10 laps or if the eligible car was involved in the caution.
- At one to go the leader can choose inside or outside everyone else double up inside/outside. In the event restarts become an issue officials reserve the right to implement single file restarts with lap cars at rear.
- The leader is the control car and restarts the race inside the box. If you jump the start or play games, you may be black flagged and must serve a pass thru penalty at pit road speed.
- Once pace car leaves field front row should gradually increase speed without slowing back down until leader reaches the box. No swerving, brake checking, laying back, or games of any kind will be tolerated.
- Stay in line. Do not advance your position before the start finish line. No three wide into turn one on a restart.

Finish:

- Once the white flag is displayed we are coming to a checkered unless the track is blocked.
- If track is blocked we will go red and revert to last lap. We will finish with a green/white/checkered

Penalties:

- If you stop on track or intentionally create a caution you will lose a minimum of two laps naturally or by penalty.
- Unapproved tire changes under yellow will be a 2-lap penalty per tire.
- Three unassisted spins or multiple avoidable incidents and you will be parked for the remainder of the event.

Spotters:

- Spotters are required in designated area during race. Spotter must check in with official for car to be able to compete. Should have car number clearly visible. If spotter leaves for any reason the car will be black flagged. Spotter should be able to monitor race control at 461.2000.



Thank you for being a part of the Spring Fling



Please support our partners that help make this possible

